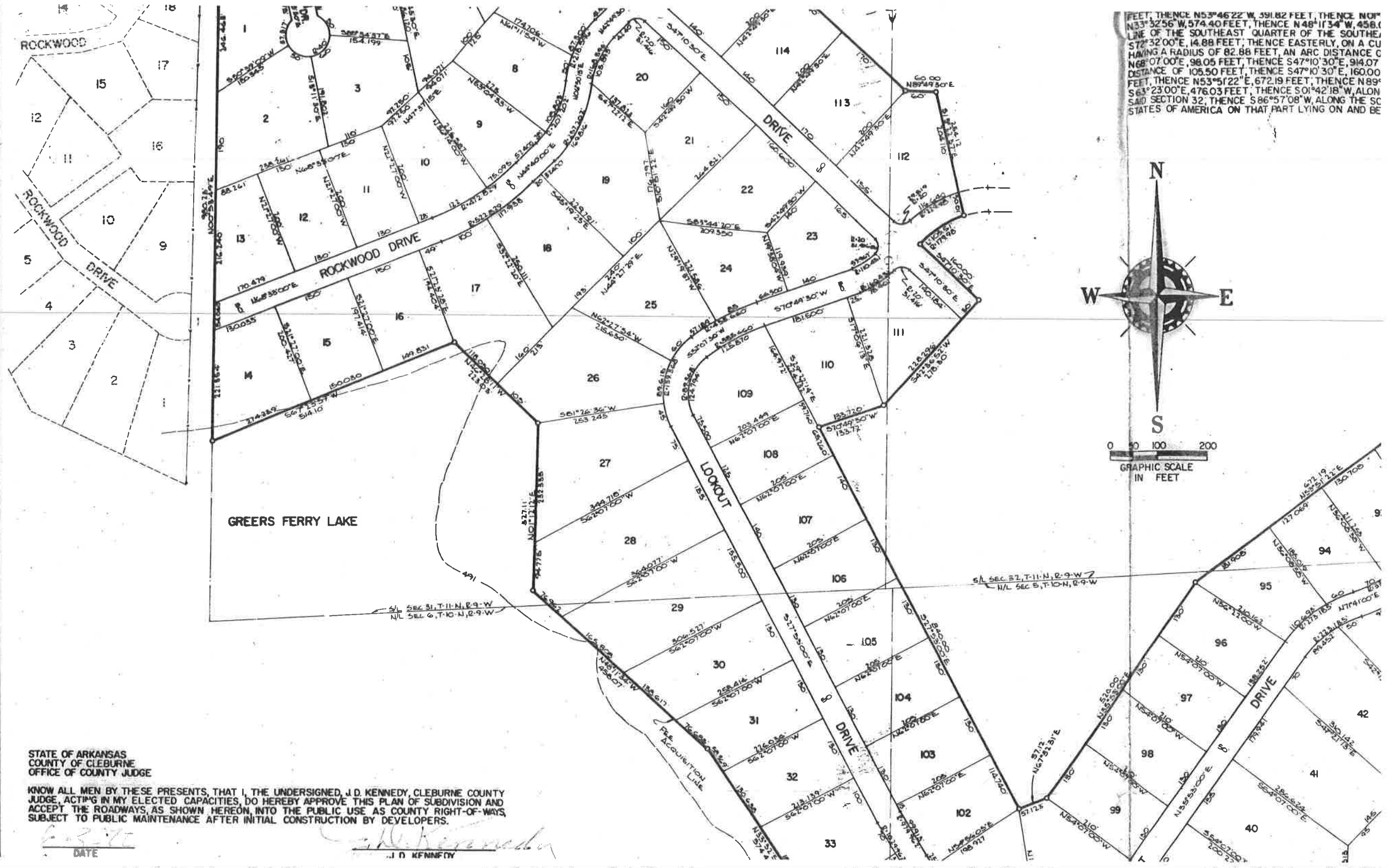


3006

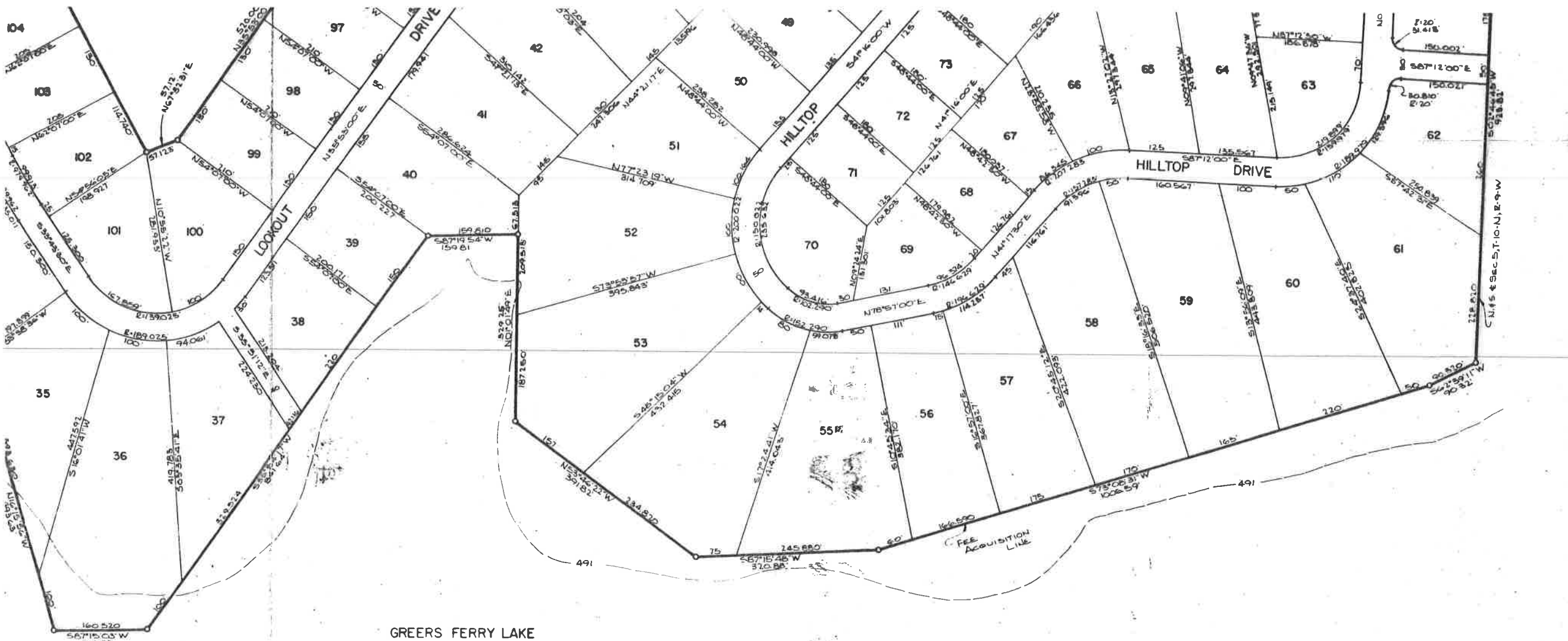


STATE OF ARKANSAS
COUNTY OF CLEBURNE
OFFICE OF COUNTY JUDGE

KNOW ALL MEN BY THESE PRESENTS, THAT I, THE UNDERSIGNED, J. D. KENNEDY, CLEBURNE COUNTY JUDGE, ACTING IN MY ELECTED CAPACITIES, DO HEREBY APPROVE THIS PLAN OF SUBDIVISION AND ACCEPT THE ROADWAYS, AS SHOWN HEREON, INTO THE PUBLIC USE AS COUNTY RIGHT-OF-WAYS, SUBJECT TO PUBLIC MAINTENANCE AFTER INITIAL CONSTRUCTION BY DEVELOPERS.

DATE

J. D. KENNEDY



FILED
JUN 1 1964
OTHA PL 37
Vita Surge

546

STATE OF ARKANSAS
COUNTY OF CLEBURNE
OFFICE OF COUNTY JUDGE

KNOW ALL MEN BY THESE PRESENTS, THAT I, THE UNDERSIGNED, J.D. KENNEDY, CLEBURNE COUNTY JUDGE, ACTING IN MY ELECTED CAPACITIES, DO HEREBY APPROVE THIS PLAN OF SUBDIVISION AND ACCEPT THE ROADWAYS, AS SHOWN HEREON, INTO THE PUBLIC USE AS COUNTY RIGHT-OF-WAYS, SUBJECT TO PUBLIC MAINTENANCE AFTER INITIAL CONSTRUCTION BY DEVELOPERS.

DATE 6-3-70

J.D. KENNEDY
CLEBURNE COUNTY JUDGE

STATE OF ARKANSAS
COUNTY OF CLEBURNE
OFFICE OF COUNTY CLERK

THIS PLAT OF ECHO HILLS SUBDIVISION FILED FOR RECORD THE 3 DAY OF JUNE, 1970, IN PLAT BOOK NO. 130 AT PAGE 413.

BILL OF ASSURANCE RECORDED THE 3 DAY OF JUNE, 1970, IN BOOK NO. 130 AT PAGE(S) 413.

APPROVED
CLEBURNE COUNTY-HEBER SPRINGS PLANNING COMMISSION

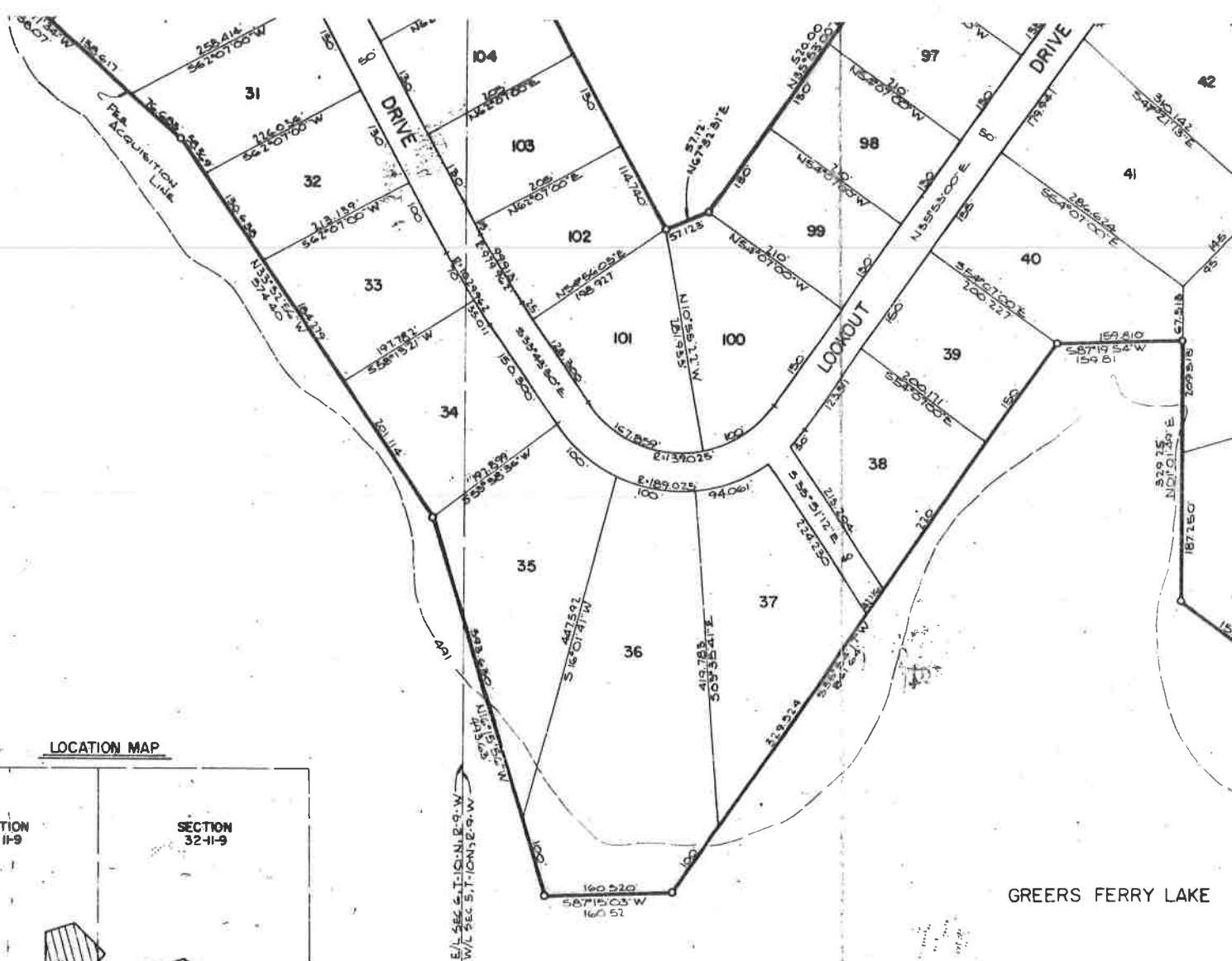
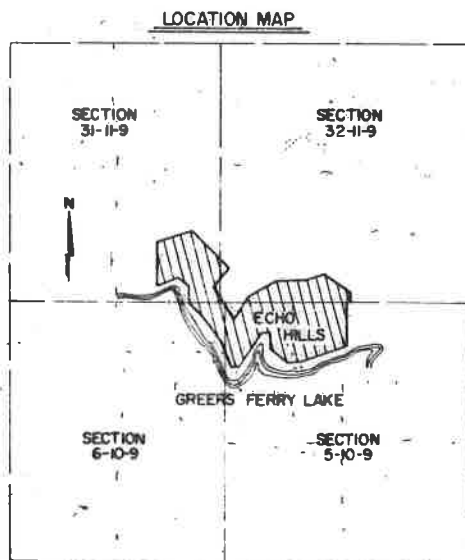
CHAIRMAN Robert D. Harrison
SECRETARY Barney T. Harrison
DATE 6-1-70

THIS PLAT IS SUBDIVIDED WITHIN A BOUNDARY SURVEY PROVIDED BY SURVEYORS, INC.

I HEREBY CERTIFY THAT I HAVE CHECKED THE BOUNDARY LINES AND PLATTED THE PROPERTY SHOWN HEREON AND THAT SAME IS TRUE AND CORRECT TO THE BEST OF MY KNOWLEDGE.

Charles O. Luna
CHARLES O. LUNA
LS 576

130 - page 411-413



FILED
JUN 7 1970

OTHA
Vita Simpson

6026