

NW COR SW/2, NW 1/4,
NW 1/4, SW 1/4, NE 1/4,
SEC 10

NE COR NW 1/4, SW 1/4
NE 1/4, SEC 10

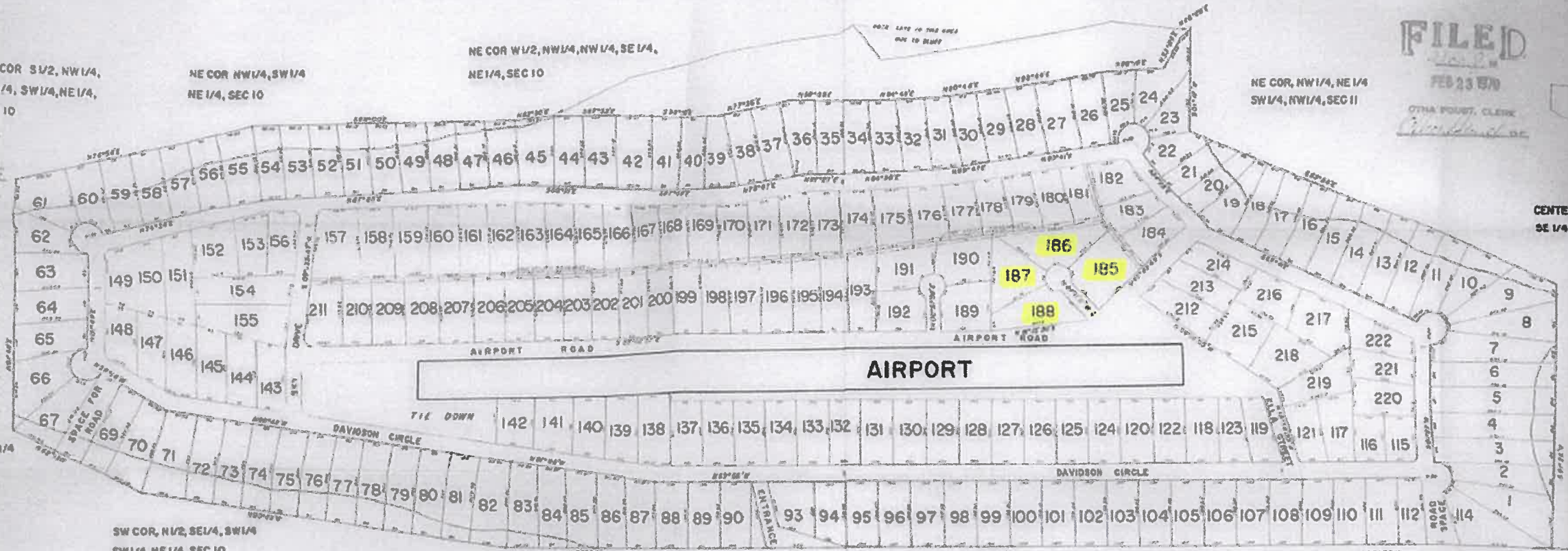
NE COR W 1/2, NW 1/4, NW 1/4, SE 1/4,
NE 1/4, SEC 10

NE COR, NW 1/4, NE 1/4
SW 1/4, NW 1/4, SEC 11

FILED
FEB 23 1970
OTHA POINT, CLERK
[Signature]



CENTER SW 1/4, NE 1/4
SE 1/4, NW 1/4, SEC 11



Ralph - Division
[Signature]

NW COR SW 1/4,
SW 1/4, SW 1/4, NE 1/4
SEC 10

SW COR, NW 1/2, SE 1/4, SW 1/4
SW 1/4, NE 1/4, SEC 10

SW COR E 1/2, SW 1/4, SW 1/4,
SE 1/4, NE 1/4, SEC 10

SW COR NW 1/4
SEC 11

SW COR SE 1/4
NW 1/4, SEC 11

SE COR W 1/2, SW 1/4
SE 1/4, SE 1/4, NW 1/4, SEC 11

CENTER
SEC 11

DATE OF REPLAT: 1-21-70
PURPOSE OF REPLAT: ADD LOTS
118 - 222

REPLAT - APPROVED
[Signature]
1-15-70

APPROVED
[Signature]
1-15-70

ROSIN and ASSOCIATES, Inc
Consulting Engineers—Land Surveyors—Urban Planners

MUNICIPAL AIRPORT
HEBER SPRINGS, ARKANSAS
Phone 362-2315

*SKY Point Estates
PLAT 2*

*Belq Assurance Bank 118 page 110
Covenants on plat*

	REPLAT POINT ESTATES	1 of 1
	PLAT 1	2-70