

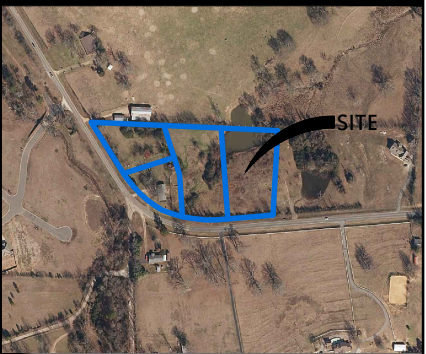


AUCTION EXHIBIT
PART OF THE N/2 OF THE SE/4
SECTION 7, TOWNSHIP 4 SOUTH, RANGE 19 WEST
ARKANSAS STATE HIGHWAY 290

PREPARED FOR:
WILSON AUCTIONEERS

HOT SPRINGS, GARLAND COUNTY

ARKANSAS



DELTA	DESCRIPTION	DATE

This document, and the ideas and designs incorporated herein, as an instrument of professional service, is the property of Crafton, Tull & Associates, Inc., and is not to be used, in whole or in part, for any other project, without the written authorization of Crafton, Tull & Associates, Inc.

1000 LedgeLawn Dr.
Conway, Arkansas 72034



Crafton Tull
engineering | surveying
501.328.3316 f 501.328.3325 f
www.craftontull.com



© 2021 Crafton, Tull & Associates, Inc.

PROJECT NO:	21261000
ISSUE DATE:	08/30/2021
DRAWN BY:	C.MORGAN
APPROVE BY:	N.TUCKER
SHEET NO.:	1 OF 1