

WEST LAND SURVEYING INC.

420 A HWY 287 VILONIA, AR
501-849-2850 501-733-2144

BASIS OF BEARINGS: Basis of Bearings is from dead description furnished client.



Survey for: Morris Pruett
Date: 9-17-2012
Scale: 1" = 100'

I hereby certify that this plat is a representation of a survey completed by me and is in accordance with existing monuments in the area.

Record document has this labeled as the NE Corner SE 1/4 SE 1/4 Section 27, T-5-N, R-11-W, Faulkner County, Arkansas

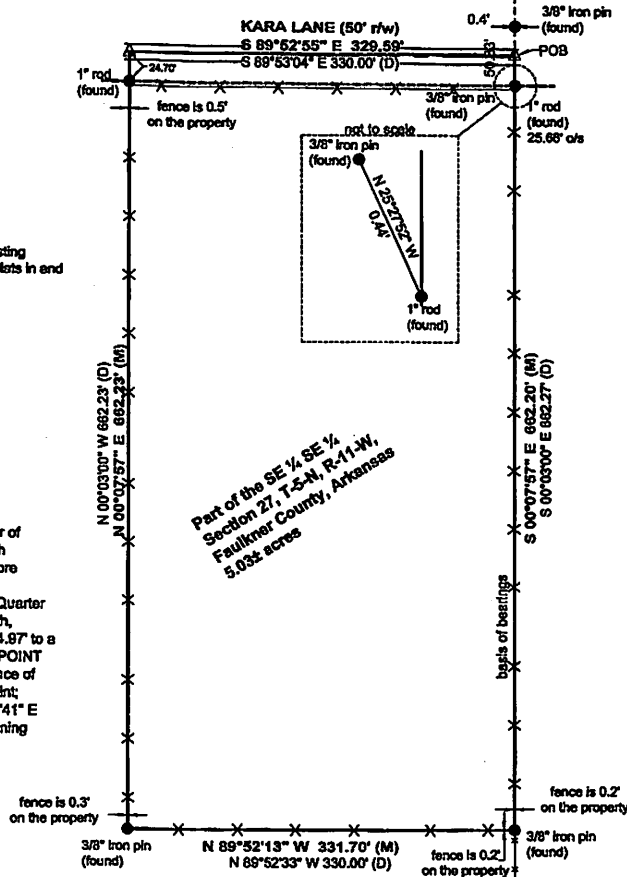
N 89°52'33" W 335.97'
1/2" iron pin (found)
NE Corner SE 1/4 Section 27, T-5-N, R-11-W, Faulkner County, Arkansas
ACCESSORIES
fence corner "West" = N 39°07'00" W 0.50'
20' post oak = S 25°15'00" W 12.4'

NOTES:

- Improvements are as shown.
- Encroachments, if any, are as shown.
- There was no flood study done.
- Monuments were accepted after being checked with existing monuments in the area and according to previous survey plats in and around the area.
- This property is subject to all roadways, easements and reservations that are of record or physically in place.

DESCRIPTION (QUITCLAIM DEED/DOC #2012-4868)

A part of the Southeast Quarter of the Southeast Quarter of Section 27, Township 5 North, Range 11 West, of the 5th Principal Meridian, Faulkner County, Arkansas, being more particularly described as follows:
Commencing at the Northeast Corner of the Southeast Quarter of the Southeast Quarter of Section 27, Township 5 North, Range 11 West; thence N 89°51'57" W a distance of 334.87' to a point; thence S 00°03'00" E a distance of 661.63' to the POINT OF BEGINNING; thence continue S 00°03'00" E a distance of 662.27' to a point; thence N 89°52'13" W 331.70' to a point; thence N 00°07'57" E 662.23' to a point; thence S 89°55'41" E 328.69', returning to the POINT OF BEGINNING. Containing 5.03 acres, more or less.



LEGEND

- M = MEASURED
- D = DEEDED
- ☒ FENCE CORNER (AS LABELED)
- SET MONUMENT (AS NOTED)
- FOUND MONUMENT (AS NOTED)
- FOUND STONE MONUMENT
- △ COMPUTED POINT
- SECTION LINE/ 1/4 SECTION LINE
- - - BROKEN LINE (NOT TO SCALE)
- BOUNDARY LINE

