

- o. Pull the truss sock over the clamps (keep the acorn nut or locking nut on to prevent tearing the truss sock) and get it into it's correct position.



p.

- q. Cut four (4) small holes to allow the bolts to pass through. Also cut a small hole to allow the power supply for the LEDs to pass through as well as the power for the operator headset and the charging brick as well.



r.

- s. Place a black washer on the bolt and then the assembled back piece. If you are by yourself, use the acorn nuts on the top bolts to keep it in place

while getting the rest of the rack. Be certain to pass the barrel plug for the LED power through the circular cutout in the center.



t.

- u. After attaching the rest of the rack, add another washer, the security washer and then the acorn nut/security nut. You may need to angle/leverage some torque to keep the bolt itself from spinning. The socket size is 9/16.



v.

- w. Place the operator's headset charging stand on top of the rack and run the power down into the truss via the hole cut earlier. The stand is USB powered and can be connected to one of the HTC charging blocks and connected into the 6way power strip.



x.

- y. Double check that everything is secure and tight. Then power it on to inspect for any lighting issues.



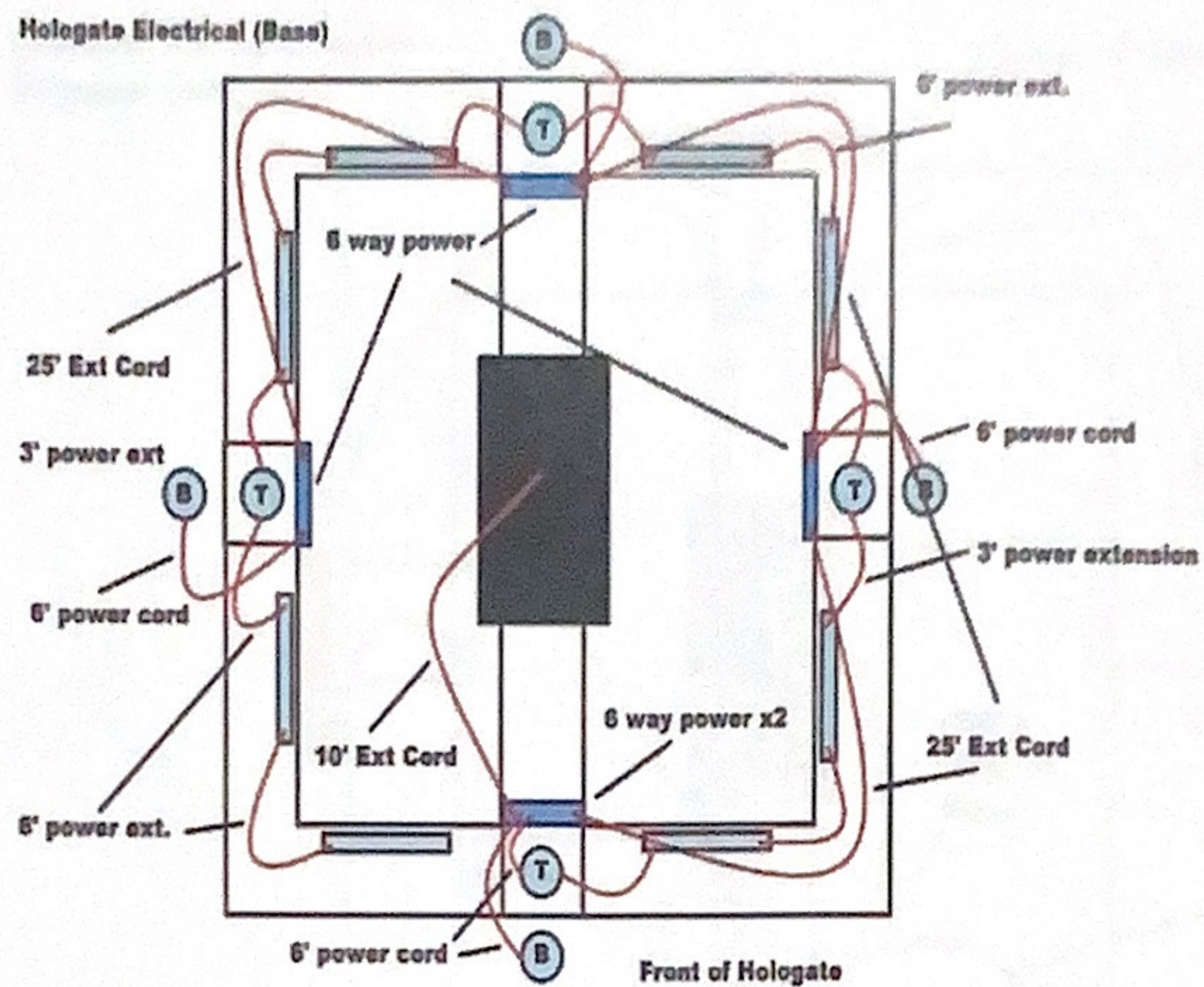
z.



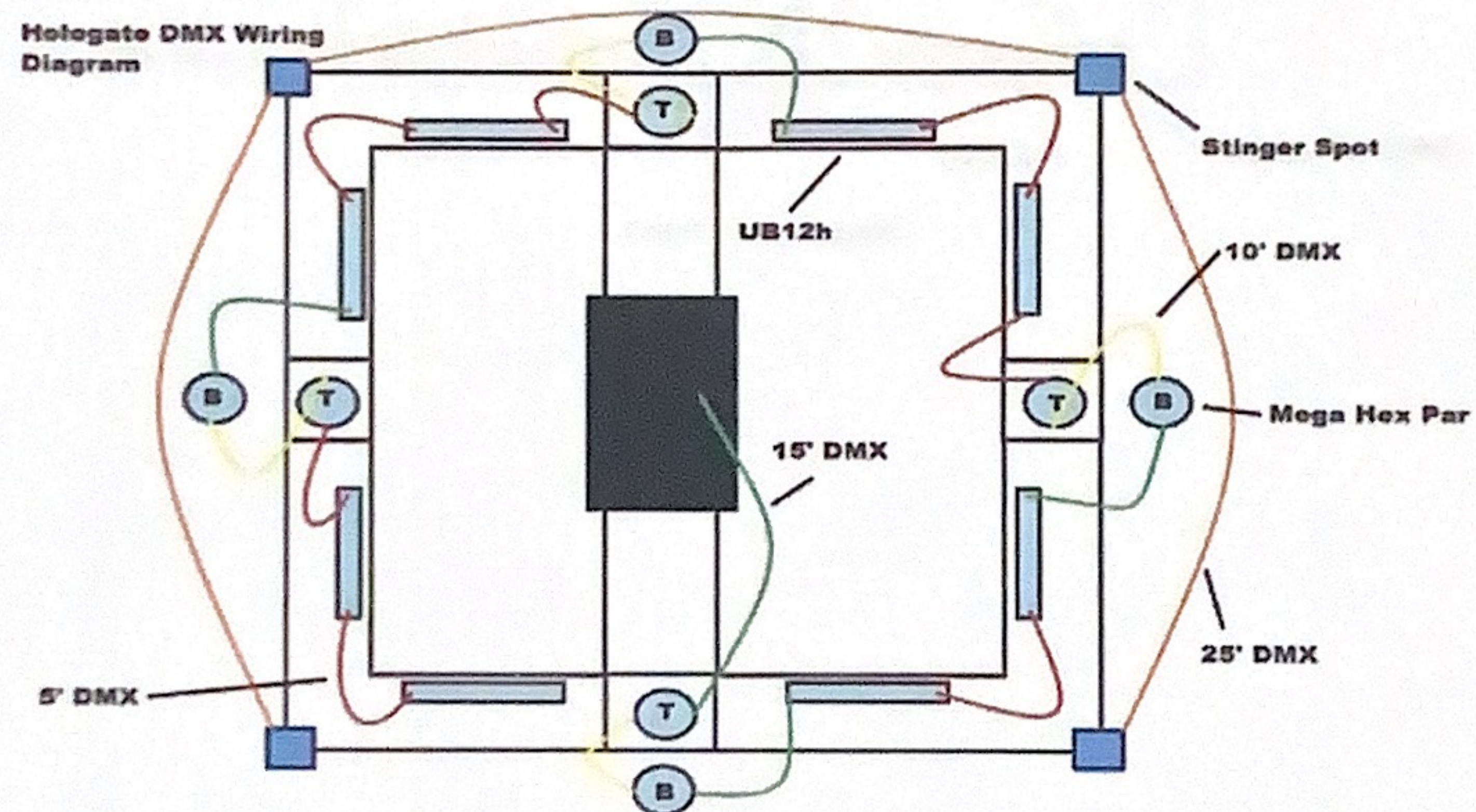
aa.

Section 5: DMX cable and Lights

5. This section, we will be attaching the effect lights as well as running power and DMX cable for the Hologate.
 - a. Attach all your effect lights, for a "standard" light package, this will only be the bar lights. Attach clamps to the light brackets BEFORE attaching to the light itself, excessive vibration and torque from the impact/screw gun may potentially cause damage to the light fixture. You will want to use small clamps on your lights as they are much easier to install than the larger clamps. First, take your two brackets from the light box. Remove the wingnut from the small clamps and place the bolt through the bottom of this bracket, set the wingnut on the bolt and spin the clamp itself, this is a much faster/easier process then attempting to use the silver nuts that come with the hardware from the truss system. Affix all clamps to all light brackets, then attach the brackets to the light itself.
 - b. Begin your DMX run from the PC tray, towards the front of the Hologate where the user interface (EVA) is located and plug into the top ADJ Hex Par light (Addr: 211, ch 6)(10'). You will plug in a power cord from the top hex par light (addr: 211, ch 6) into the 6 way power strip you had installed previously. Then take a power cord from the bottom Hex Par (199) and plug it into the 6 way. All bar lights should have power "slaved" to them from the top Hex Pars. Then take a 10' DMX cable from the top light to the bottom, then a 15' DMX cable from the bottom light up the truss leg over to the bar light, then a 5' cable around the corner from bar light (145) to the next bar light. Follow the diagrams below:

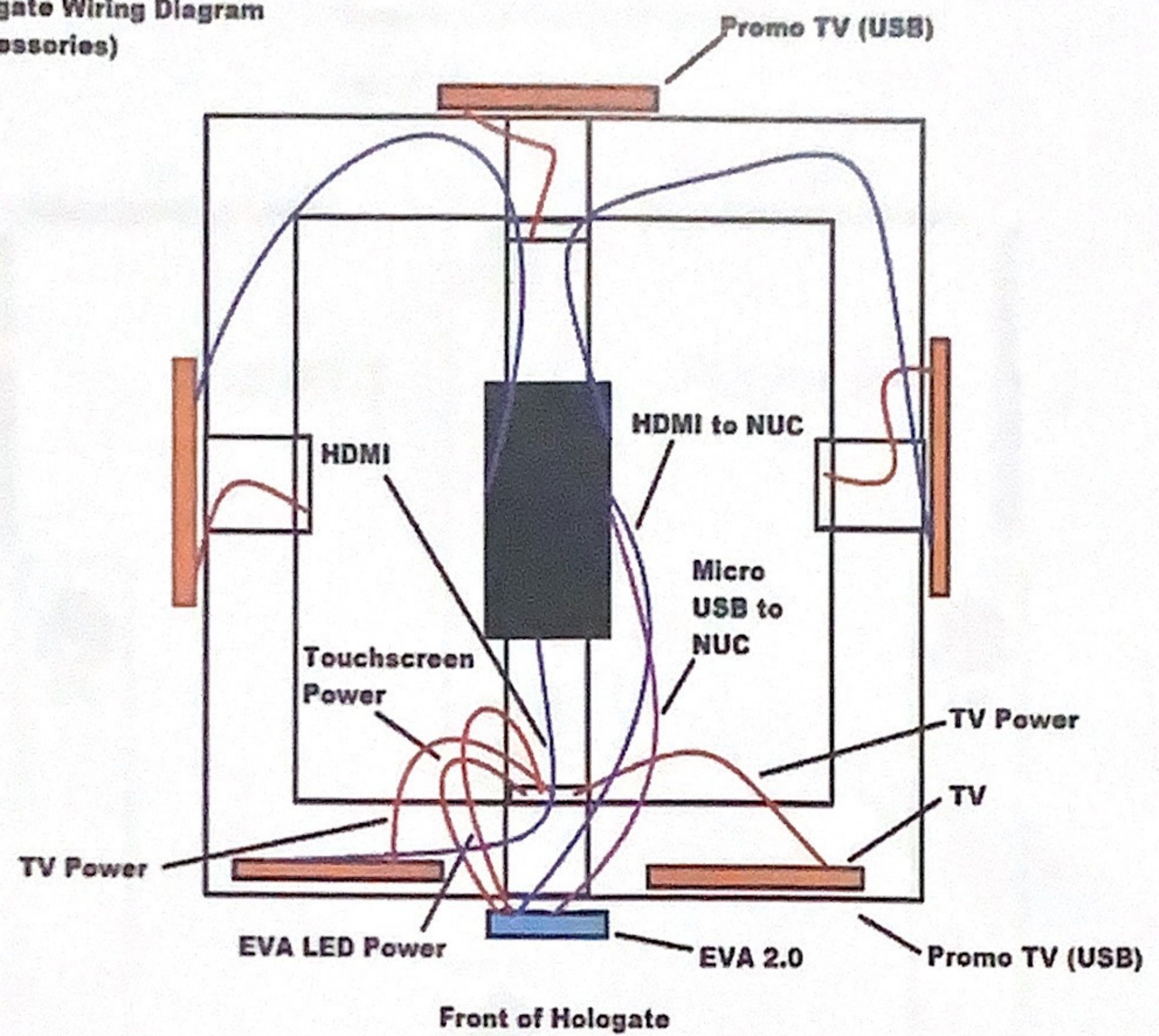


C.



d.

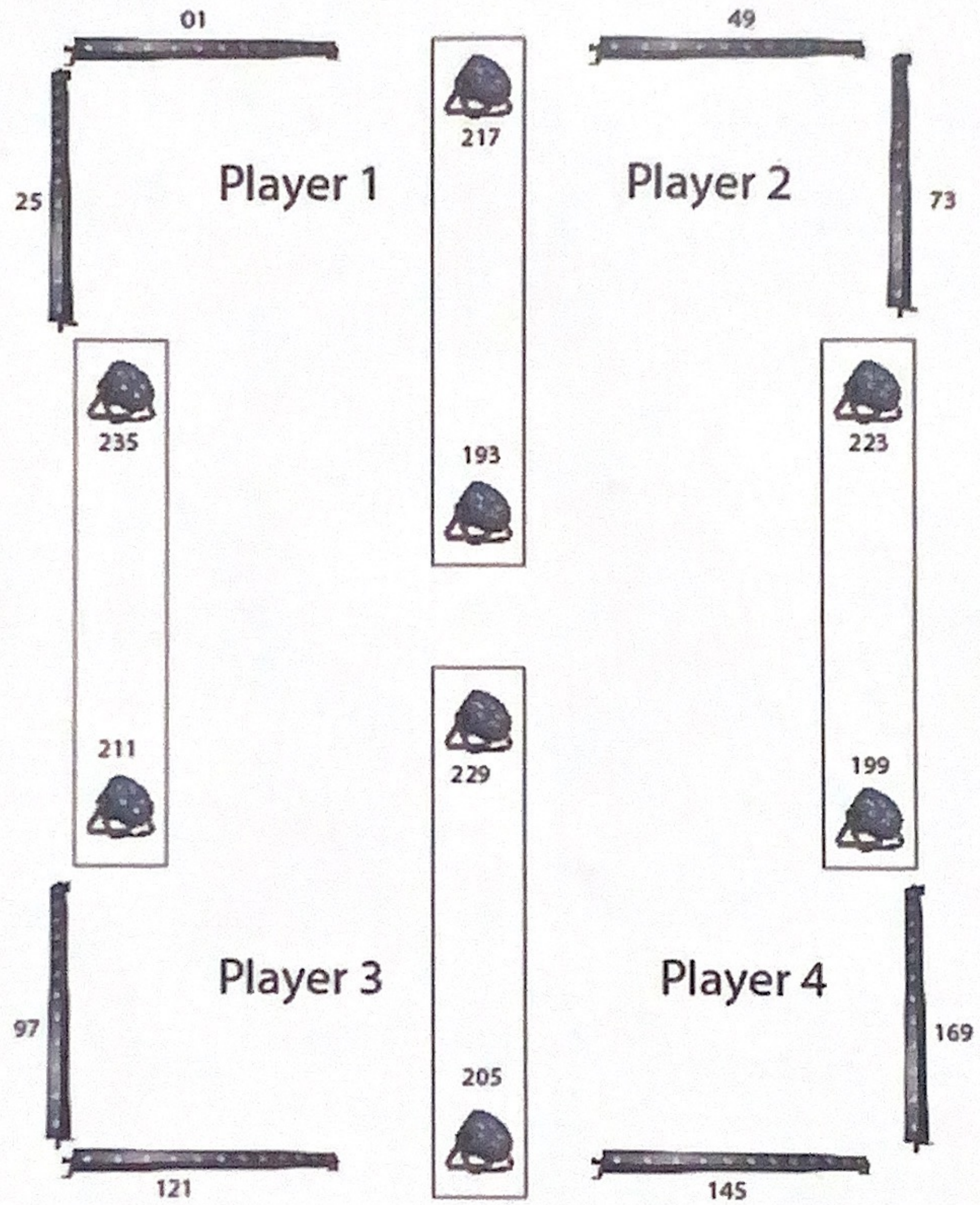
Hologate Wiring Diagram
(Accessories)



e.

Mega Hex Par Channel Mode = 6

UB12H Channel Mode = 6



f.