

EDINBROOK PARK

BROOKLYN PARK, MN

EARL. F. ANDERSEN, INC.

PRESALE #:

SCALE 1/4" = 12"

THIS PLAY AREA & EQUIPMENT IS
DESIGNED FOR AGES 5-12 YEARS

THE EQUIPMENT ON THIS PLAN
IS CERTIFIED & VALIDATED TO BE IN
CONFORMANCE WITH THE AMERICAN SOCIETY
FOR TESTING & MATERIALS (ASTM) F1487
STANDARDS FOR PUBLIC SAFETY.

IT IS THE MANUFACTURERS OPINION THAT
THIS PLAYSTRUCTURE CONFORMS TO
ACCESSIBILITY REQUIREMENTS OF THE A.D.A.
(AMERICANS WITH DISABILITIES ACT).

NOTE: ALL ABOVE DIMENSIONS ARE
REFERENCE DIMENSION. REFER TO YOUR
INDIVIDUAL INSTALLATION COMPONENT
INSTRUCTIONS FOR DETAILS.

BECAUSE OF THE PRECISE FIT OF L.S.I.
COMPONENTS, IT IS IMPORTANT TO ATTACH
SLIDE HOODS, ACTIVITY PANELS, PIPE
BARRIERS & GUARD RAILS BEFORE
CONCRETE FOOTINGS ARE POURED

CONCRETE FOOTINGS ARE REQUIRED ON
ALL IN-GROUND COMPONENTS.

CHOOSE A PROTECTIVE SURFACING MATERIAL
THAT HAS A CRITICAL HEIGHT VALUE OF
AT LEAST THE HEIGHT OF THE HIGHEST
ACCESSIBLE PART/FALL HEIGHT OF THE
ADJACENT EQUIPMENT. (REF. CONSUMER
PRODUCT SAFETY COMMISSION (CPSC)
GUIDELINES, SECTION 10: SURFACING.)

PLAYVENTURE

ORDER #:

74969

PHASE-2

12-21-98 ENGINEERED BY: TLL

**LANDSCAPE
STRUCTURES INC**

We Make Exceptional Fun!!

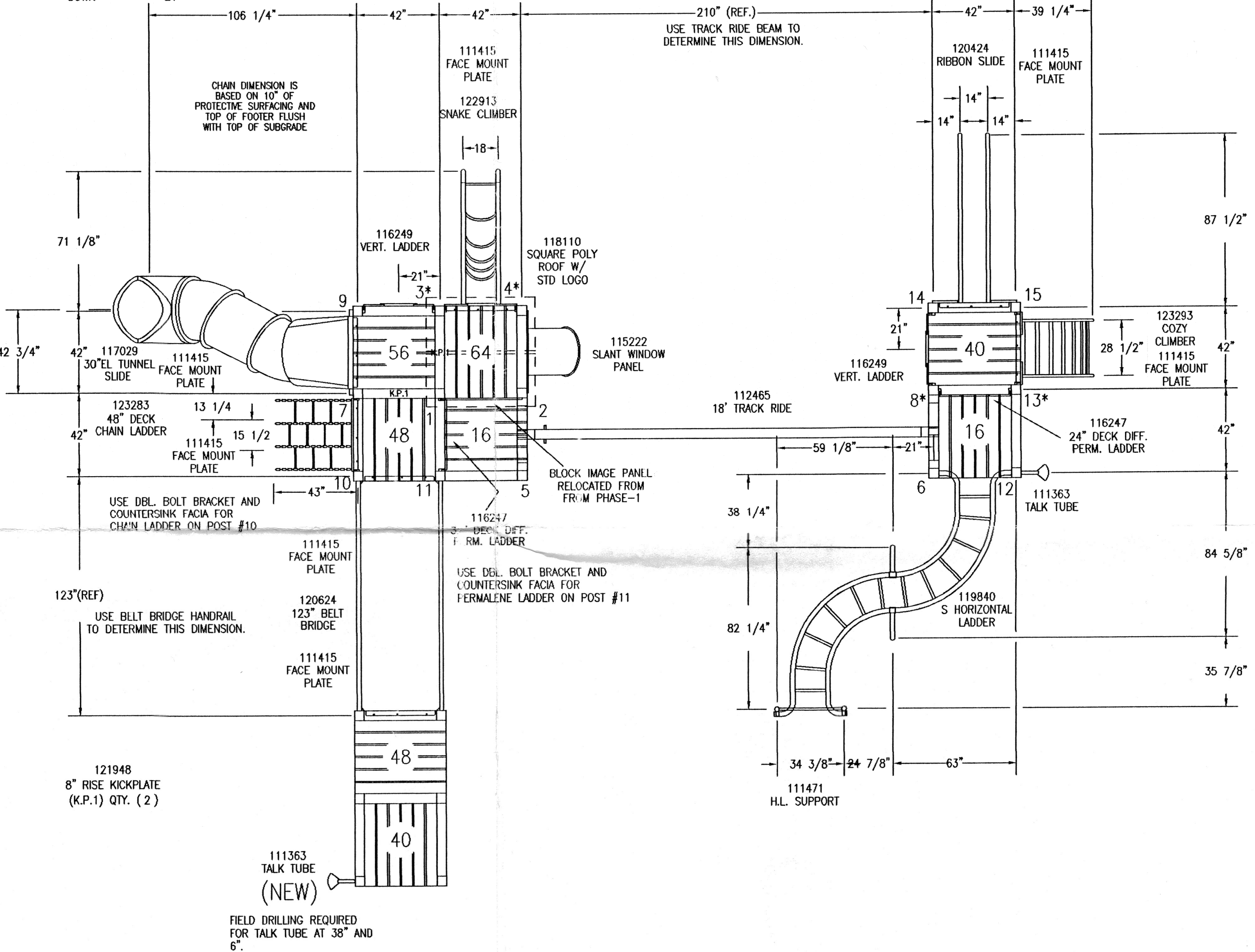
601 7th STREET SOUTH - P.O. BOX 198
DELANO, MINNESOTA 55328

PH: 1-800-328-0035 FAX: 1-612-972-6091



* = #113977 OFFSET BOLT BRACKET LOCATION CHART

| POST # | COMPONENT | MOUNTING POSITION | HOLE DIMENSION FROM FINISHED GRADE |
|--------|-----------|-------------------|------------------------------------|
| 3 | 122913 | DOWN | 95 1/8 |
| 4 | 122913 | DOWN | 95 1/8 |
| 8 | 116247 | DOWN | 71 1/8 |
| 8 | 116247 | DOWN | 21 |
| 13 | 116247 | DOWN | 71 1/8 |
| 13 | 116247 | DOWN | 21 |



POST/ARCH LENGTHS

- 1-4 = 174"
- 5-9 = 132"
- 10-11 = 124"
- 12-15 = 116"

EXISTING
STRUCTURE

INSTALL POSTS SO THAT
IDENTIFICATION NUMBERS
ARE FACING IN DIRECTION
OF ARROW.

