

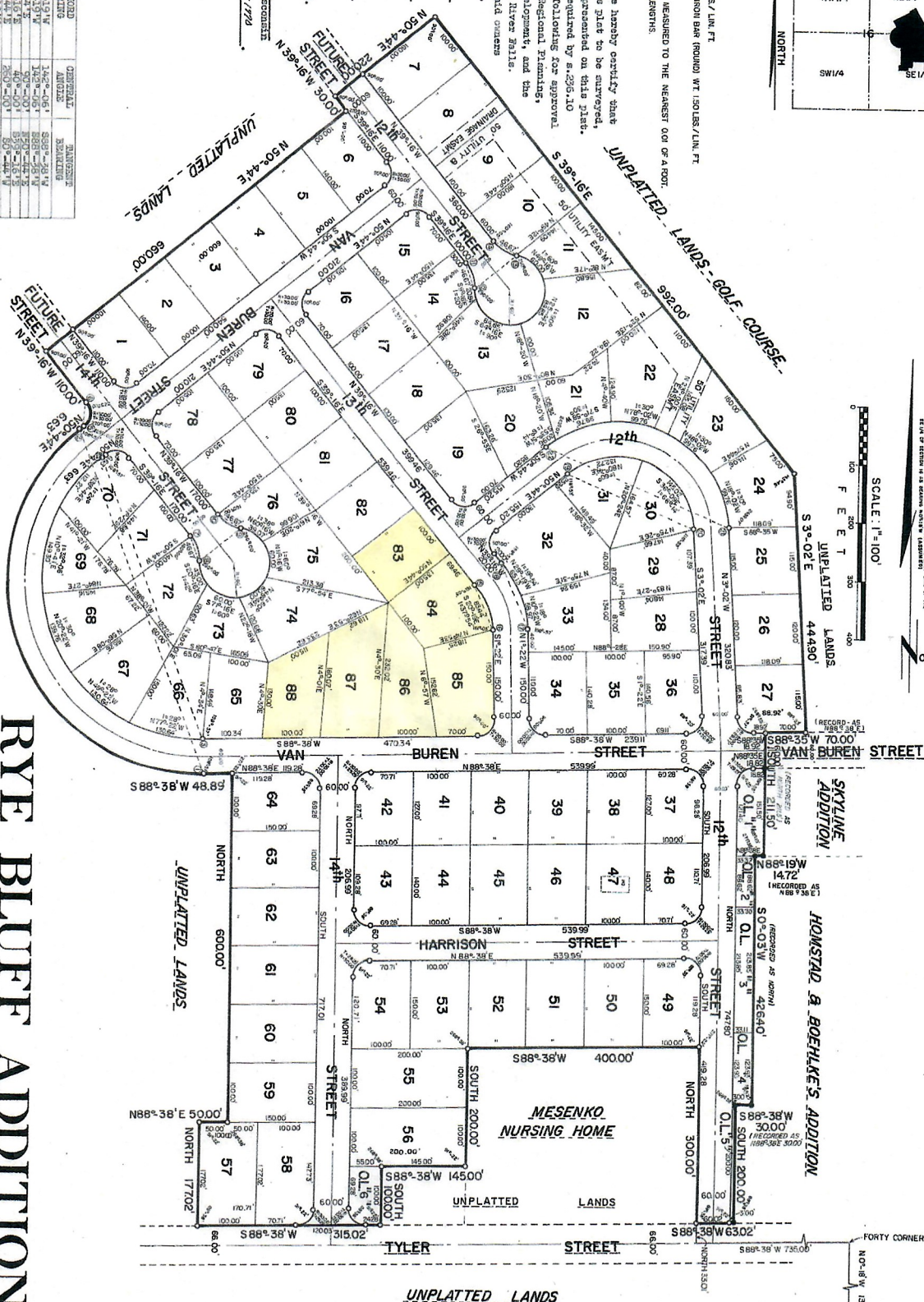
0.50 1/4" x 30" IRON BAR ROUND WT 4.17 LBS./LIN. FT.  
 ALL OTHER CORNERS STAKED WITH 3/4" x 24" IRON BAR ROUND WT 1.50 LBS./LIN. FT.  
 EXISTING 1" IRON PIPE  
 NOTE: ALL DISTANCES, LENGTHS & WIDTHS ARE MEASURED TO THE NEAREST 0.01 OF A FOOT.  
 DISTANCES ALONG CURVES ARE CHORD LENGTHS.

**OWNER'S CERTIFICATION**  
 As owners of Lots 47 and 48, we hereby certify that we caused this land described on this plat to be surveyed, divided, mapped and dedicated as represented on this plat. We also certify that this plat is required by s.236.10 on s.236.12 to be submitted to the following for approval or objection: Director, Local and Regional Planning, Department of Local Affairs and Development, and the Common Council of the City of Black River Falls. WITNESS the hand and seal of said owners this 24th day of July, 1968.

*Arthur O. Rosenburg*  
*Arthur O. Rosenburg*  
 Grace H. Rosenburg, His wife  
 In presence of:

Subscribed and sworn to me this 24th day of July, 1968.  
*Donald S. Miller*  
 Notary Public, County, Wisconsin  
 By Commission Expires May 17, 1970

CURVE	BLVD	CHORD	CHORD	GENERAL	MINIMUM
NO.	NO.	NO.	NO.	NO.	NO.
1-2	230.00'	510.94'	150.00'	588'-38"	14'
3-4	230.00'	510.94'	150.00'	588'-38"	14'
5-6	230.00'	510.94'	150.00'	588'-38"	14'
7-8	230.00'	510.94'	150.00'	588'-38"	14'
9-10	230.00'	510.94'	150.00'	588'-38"	14'
11-12	230.00'	510.94'	150.00'	588'-38"	14'
13-14	230.00'	510.94'	150.00'	588'-38"	14'
15-16	230.00'	510.94'	150.00'	588'-38"	14'
17-18	230.00'	510.94'	150.00'	588'-38"	14'
19-20	230.00'	510.94'	150.00'	588'-38"	14'
21-22	230.00'	510.94'	150.00'	588'-38"	14'
23-24	230.00'	510.94'	150.00'	588'-38"	14'
25-26	230.00'	510.94'	150.00'	588'-38"	14'
27-28	230.00'	510.94'	150.00'	588'-38"	14'
29-30	230.00'	510.94'	150.00'	588'-38"	14'
31-32	230.00'	510.94'	150.00'	588'-38"	14'
33-34	230.00'	510.94'	150.00'	588'-38"	14'
35-36	230.00'	510.94'	150.00'	588'-38"	14'
37-38	230.00'	510.94'	150.00'	588'-38"	14'
39-40	230.00'	510.94'	150.00'	588'-38"	14'
41-42	230.00'	510.94'	150.00'	588'-38"	14'
43-44	230.00'	510.94'	150.00'	588'-38"	14'
45-46	230.00'	510.94'	150.00'	588'-38"	14'
47-48	230.00'	510.94'	150.00'	588'-38"	14'
49-50	230.00'	510.94'	150.00'	588'-38"	14'
51-52	230.00'	510.94'	150.00'	588'-38"	14'
53-54	230.00'	510.94'	150.00'	588'-38"	14'
55-56	230.00'	510.94'	150.00'	588'-38"	14'
57-58	230.00'	510.94'	150.00'	588'-38"	14'
59-60	230.00'	510.94'	150.00'	588'-38"	14'
61-62	230.00'	510.94'	150.00'	588'-38"	14'
63-64	230.00'	510.94'	150.00'	588'-38"	14'
65-66	230.00'	510.94'	150.00'	588'-38"	14'
67-68	230.00'	510.94'	150.00'	588'-38"	14'
69-70	230.00'	510.94'	150.00'	588'-38"	14'
71-72	230.00'	510.94'	150.00'	588'-38"	14'
73-74	230.00'	510.94'	150.00'	588'-38"	14'
75-76	230.00'	510.94'	150.00'	588'-38"	14'
77-78	230.00'	510.94'	150.00'	588'-38"	14'
79-80	230.00'	510.94'	150.00'	588'-38"	14'
81-82	230.00'	510.94'	150.00'	588'-38"	14'
83-84	230.00'	510.94'	150.00'	588'-38"	14'
85-86	230.00'	510.94'	150.00'	588'-38"	14'
87-88	230.00'	510.94'	150.00'	588'-38"	14'
89-90	230.00'	510.94'	150.00'	588'-38"	14'
91-92	230.00'	510.94'	150.00'	588'-38"	14'
93-94	230.00'	510.94'	150.00'	588'-38"	14'
95-96	230.00'	510.94'	150.00'	588'-38"	14'
97-98	230.00'	510.94'	150.00'	588'-38"	14'
99-100	230.00'	510.94'	150.00'	588'-38"	14'



There are no objections to this plat with respect to Sec. 236.15, 236.16, 236.20 and 236.21 (1) and (2), Statutes.  
*Donald S. Miller*  
 Notary Public, County, Wisconsin  
 Department of Local Affairs & Development

**RYE BLUFF ADDITION**  
**TO THE CITY OF BLACK RIVER FALLS**  
 LOCATED IN THE N/2 OF THE SE/4 AND THE S/2 OF THE  
 NE/4 OF SECTION 16, T21N - R4W, CITY OF BLACK RIVER FALLS,  
 JACKSON COUNTY, WISCONSIN