

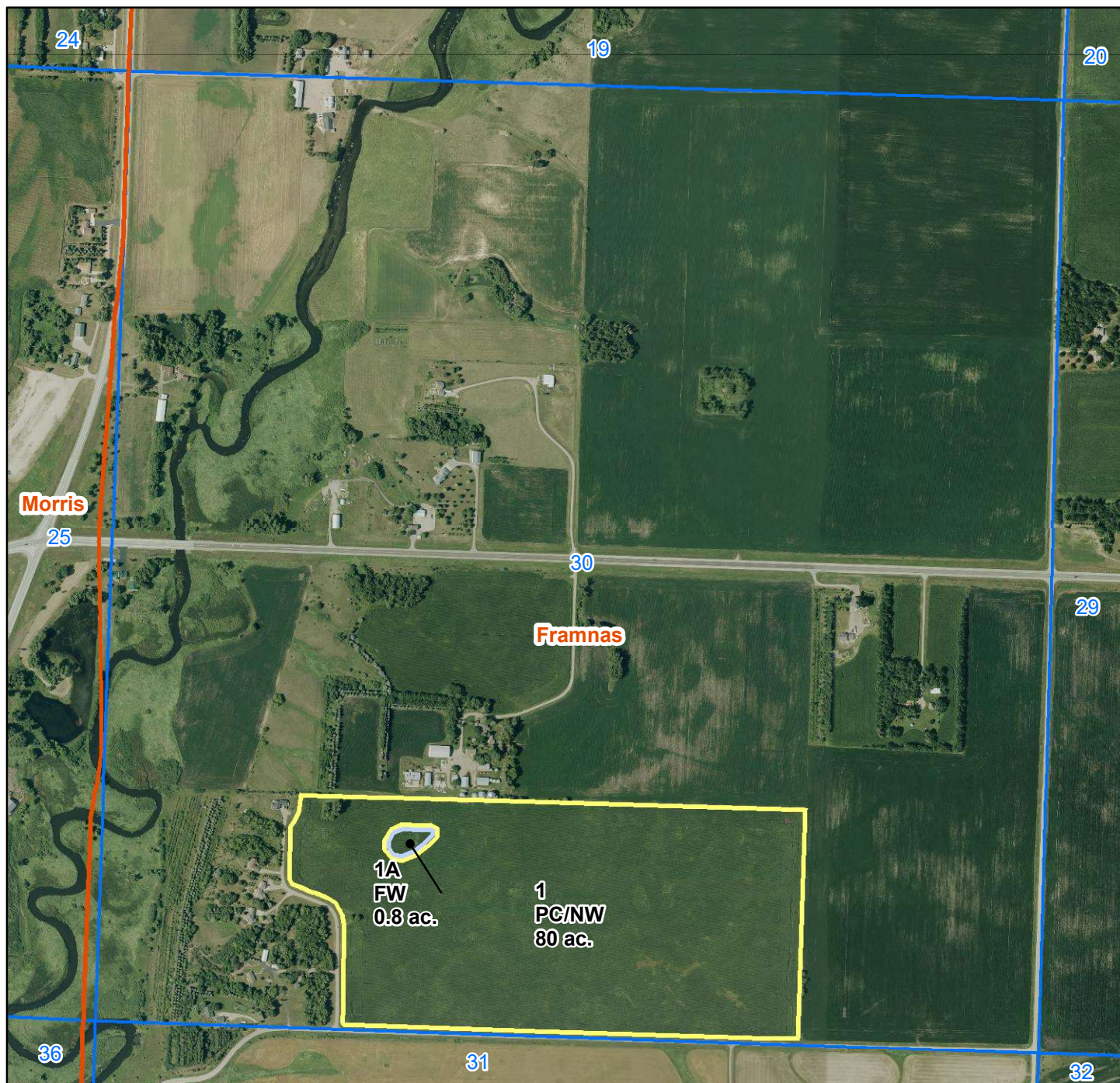


# Certified Wetland Determination

Customer: Rickmeyer

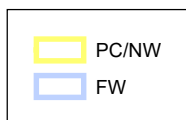
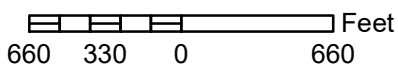
Tract: 3893

3/6/2024



**Stevens County**  
**S30 Framnas (T125 R41)**

1:10,000 1 inch = 833 feet



*This certified wetland determination/delineation has been conducted for the purpose of implementing the wetland conservation provisions of the Food Security Act of 1985. This determination/delineation may not be valid for identifying the extent of the Corps of Engineers' (COE's) Clean Water Act jurisdiction for this site. Other federal, state or local permits or restrictions may apply to activities impacting wetlands. Contact the US Fish and Wildlife Service for information concerning conservation easements. Contact the Local Governmental Unit (LGU) for State Wetland Conservation Act permits and Minnesota Department of Natural Resources for protected water permits prior to initiating wetland activities by completing the "Minnesota Joint Project Notification Form" available from the LGU.*

