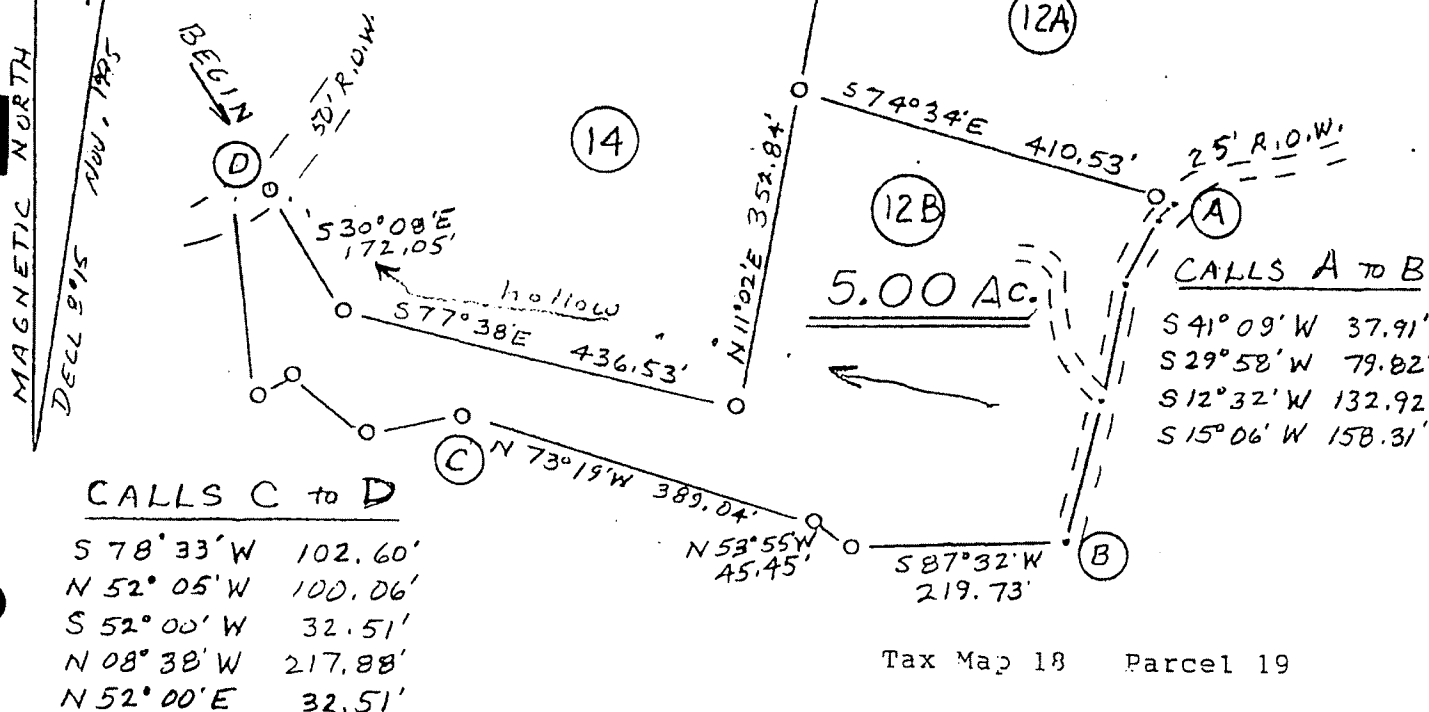


SCALE: 1 inch = 200 feet

KEY

- - 5/8" rebar set
- - point in center of road



PLAT OF SURVEY
FOR
BUCK RIDGES, INC.
2nd ADDITION, LOT 12B

Being part of a 212.525 acre tract conveyed by Erwin Michael, et al., to Buck Ridges, Inc., by deed dated July 8, 1993, and recorded in the office of the Clerk of Pendleton County, Wv, in DB 134 P. 667.

MAY 1996
by
Thomas w. Firor
Professional Surveyor

Thomas W. Firor

